

B&C ID.206 50/50 - WU 126

F I F T
50/50
I F T Y

B&C
COLLECTION



REGULAR FIT






Full zip sweatjacket with "B&C No Label" solution for easy rebranding. Versatile style designed for all types of activity.



HEATHER GREY ANTHRACITE BLACK RED NAVY

UNISEX STYLE

designed to fit both men and women

-  50% cotton, 50% polyester
-  Brushed fleece inside
-  270 g/m²
-  XS - S - M - L - XL - 2XL
-  10 pcs/pack & 30 pcs/carton

Fabric

- This full zip sweatjacket is cut from soft premium 270 gsm 50% cotton - 50% polyester fabric:
 - Full bodied hand-feel
 - Fleecy inside

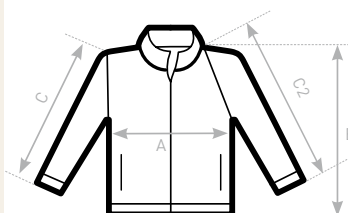
Features

- "B&C No Label" solution for easy rebranding
- Contemporary look designed for all types off activity

- Bottom hem and cuffs with 1x1 elastane rib for a perfect fit
- Straddle stitched seams on armhole for strength and optimal wearing comfort
- Welt pockets for a sophisticated look
- Self fabric collar
- Long lasting qualitative tone-on-tone coil zip with metal slider and puller
- Regular fit
- Set-in sleeves
- Side seams

Decoration

- Smooth surface fabric made to be decorated
- Kissing (covered) zip for full front decoration
- Fabric has been tested to ensure it delivers great results across a range of decoration techniques (Screen print, transfer, embroidery)
- Pocketing of welt pocket is tone on tone and made of single-jersey (=less thickness) which makes it easier to decorate



SIZES [CM]

| B&C ID.206 50/50 WU 126 | XS | S | M | L | XL | 2XL | 3XL | 4XL |
|-------------------------------|----|----|----|----|----|-----|-----|-----|
| A HALF CHEST | 48 | 51 | 54 | 57 | 60 | 63 | - | - |
| B BODY LENGTH FROM NECK POINT | 65 | 67 | 69 | 71 | 73 | 75 | - | - |
| C SLEEVE LENGTH | 65 | 66 | 67 | 68 | 69 | 70 | - | - |



OEKO-TEX®
CONFIDENCE IN TEXTILES
STANDARD 100
1501003 Centexbel
Tested for harmful substances.
www.oeko-tex.com/standard100